



GAT MONTHLY MEMBERSHIP PROGRESS REPORT

Results as of: 5/31/2022

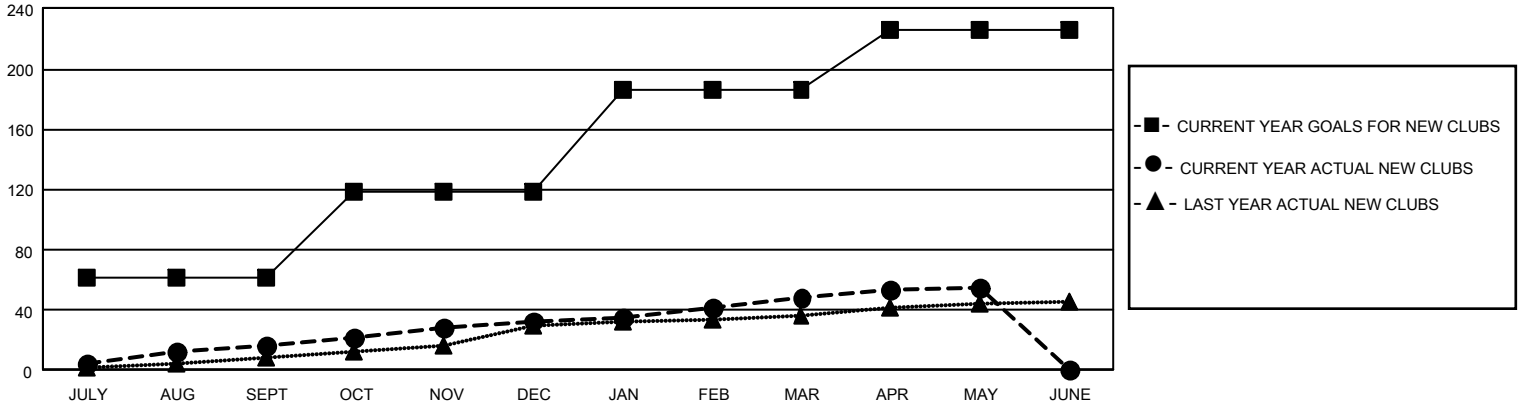
GAT Constitutional Area 5 - Korea

REPORT DOES NOT INCLUDE CLUBS IN UNDISTRICTED AREAS.

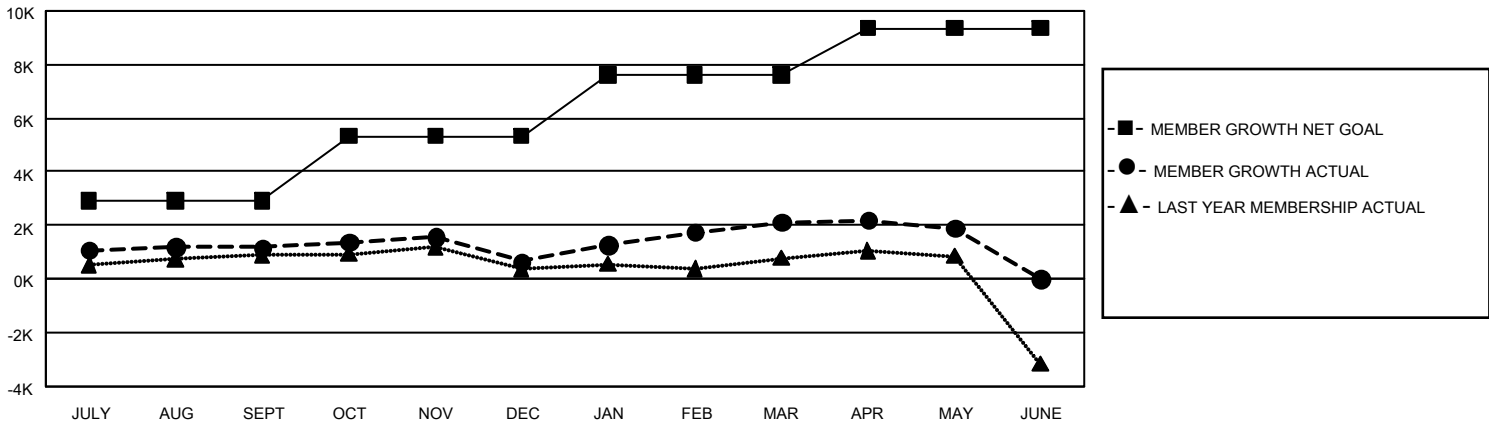
Clubs			
RESULTS FOR 2021-2022			
QUARTER	NEW CLUB GOAL	NEW CLUBS	DROPPED CLUBS
JULY/AUG/SEPT	183	16	27
OCT/NOV/DEC	174	17	10
JAN/FEB/MAR	201	15	2
APR/MAY/JUNE	120	7	3

Members			
RESULTS FOR 2021-2022			
QUARTER	MEMBER GROWTH NET GOAL	MEMBER GROWTH ACTUAL	DROPPED MEMBERS ACTUAL (including transfers)
JULY/AUG/SEPT	2925	3,743	2,365
OCT/NOV/DEC	2400	2,161	2,604
JAN/FEB/MAR	2293	2,288	785
APR/MAY/JUNE	1738	1,134	1,294

GOALS AND ACTUAL NEW CLUBS CUMULATIVE



GOALS AND ACTUAL MEMBERS CUMULATIVE



DROPPED CLUBS: 42

1,480 CLUBS OF 2,095 ADDED 1 OR MORE NEW MEMBERS

GENDER DISTRIBUTION

MALE	55,797 (74.34%)
FEMALE	19,257 (25.66%)
NON BINARY	0 (0.00%)
PREFER NOT TO ANSWER	0 (0.00%)

DROPPED MEMBERS

DECEASED	205
CLUB CANCELLED	443
OTHER	6,400
TOTAL	7,048

[CLICK HERE FOR CUMULATIVE MEMBERSHIP DATA](#)

TOTAL FAMILY UNIT MEMBERS	5,484
FAMILY MEMBERS PAYING HALF DUES	3,186